



**Textile
Printing**



KIIAN S.p.A.
22070 Luisago (Como) Italy
Via A. De Gasperi, 1
Tel. +39 031 9090111
Fax + 39 031 920505
info@kiiian.it
www.kiiian.it

KIIAN S.p.A. - Via Zamenhof, 12 - 36100 VICENZA
Tel. +39 0444 914382 - Fax +39 0444 918196

KIIAN MANOUKIAN SHANGHAI Co., Ltd.
Building A12, No.5399, Waiqingsong Road
Qingpu Industrial Zone - Shanghai 201700, China
Tel. +86 21 69211223 - 69211286 Fax +86 21 69211225

KIIAN INKS IBÉRICA, S.L.
Can Coll, n.15 - naves 22-23
08185 Lliçà de Vall Barcelona -
Tel. +34 93 8439217 Fax +34 93 8439127



**Think
in colour**

Textile Printing



A LEADERSHIP CONSOLIDATED IN TIME

Textile Printing and Como represent a well-known and indivisible union in terms of quality, creativity and innovation.

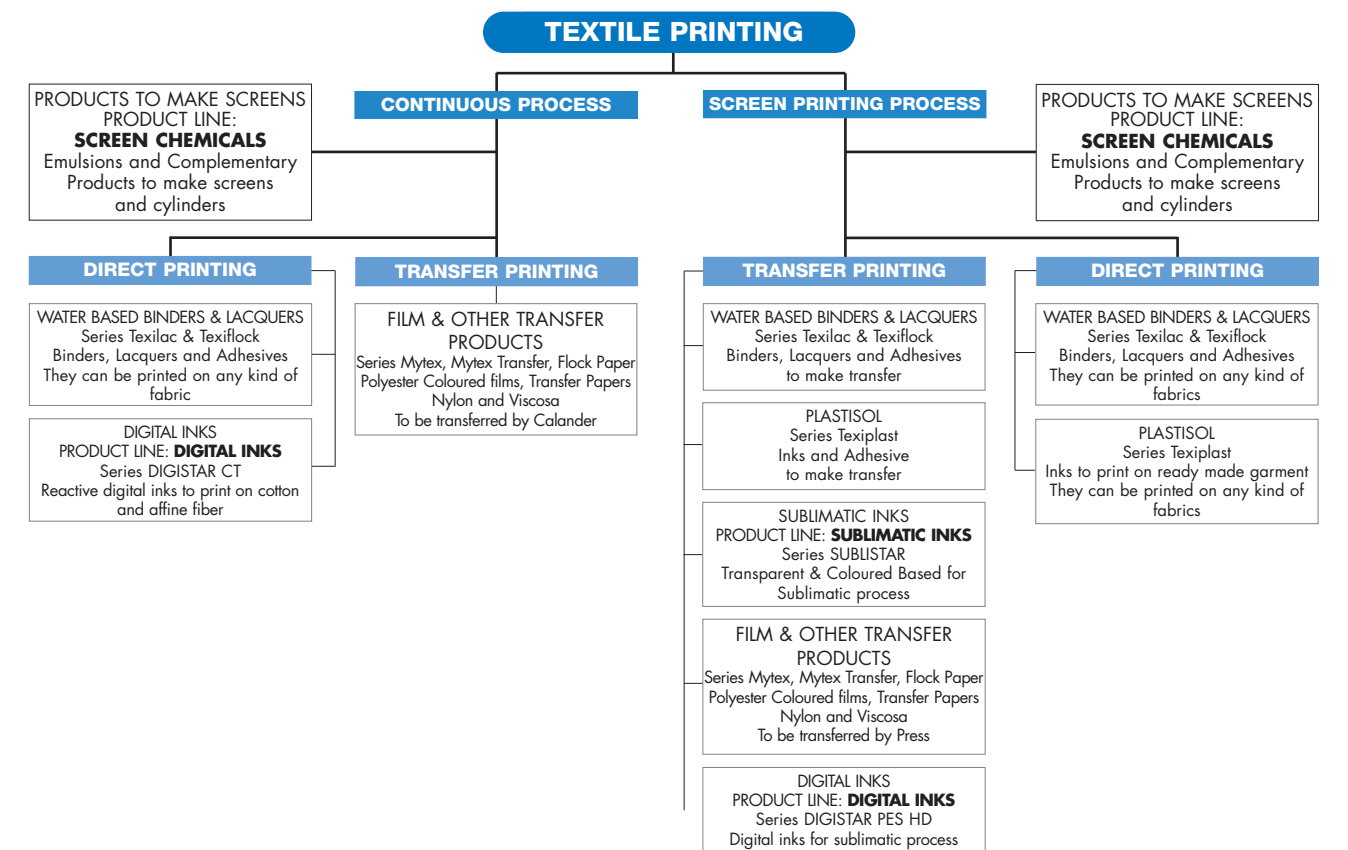
In the core of this world, KIIAN S.p.A. has improved an extraordinary receptivity to its requirements conveying them to the textile screen printing world, attaining high-level end results.



- **WATER BASED LACQUERS AND BINDERS**
- **PLASTISOL**
- **AUXILIARIES**
- **PRODUCTS FOR THE PREPARATION OF THE STENCILS**

TEXTILE PRINTING ACCORDING TO KIIAN SPA

Thanks to the synergy of our Research Teams, it has been possible to study "Solutions" to achieve the result accuracy and to improve the Industrial Process through the right choice of products combination.



Textile Printing



WATER-BASED LACQUERS AND BINDERS

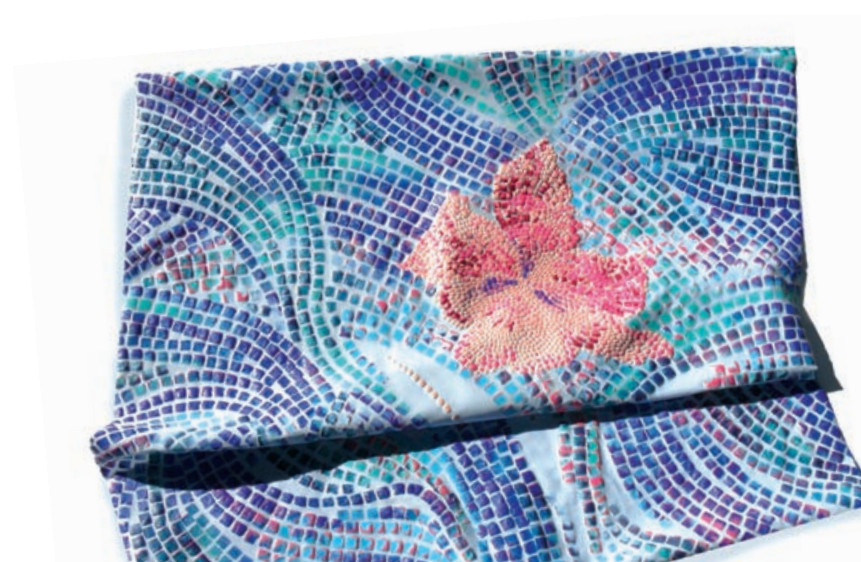
The attention to the environmental impact together with innovative and refined solutions, as basic characteristics of our proposal, allow to obtain excellent Screen Printing results on many textile substrates.

WATER BASED LACQUERS AND BINDERS											
PRODUCTS	CHARACTERISTICS									SUGGESTED EMULSIONS ZERO-IN RANGE	
	ROOM-TEMPERATURE DRYING	COLOURED SERIES	PIGMENTABLE	TRANSFER	OPACITY	ELASTICITY	BRIGHTNESS	GENERAL FASTNESS	SOFTNESS		
TRANSPARENTS	ECOTEX CONCENTRATO		●			4	3	4	5	WR DUAL W PLUS	
	FITOPRINT TRASPARENTE	●		●		4	3	2	5		
	TEXILAC A SPRUZZO TRASPARENTE	●		●		4	3	2	4		
	TEXILAC AIRTEX	●	●			4	5	4	4	WR DUAL W PLUS	
	TEXILAC AIRTEX BASE	●		●		4	5	4	4		
	TEXILAC APS TRASPARENTE	●		●		4	3	3	5	WR DUAL W PLUS UNIVERSAL	
	TEXILAC BASE TRANSFER ELASTICO			●	●	5	4	4	4		
	TEXILAC E-LF TRASPARENTE			●		5	3	3	3		
	TEXILAC HT 2R			●		4	5	4	4		
	TEXILAC MONO A FREDDO TRASPARENTE			●		4	4	4	3		
	TEXILAC PO TRASPARENTE			●		3	3	5	2		
	TEXILAC PO-E SF TRASPARENTE			●		5	3	3	3		
	TEXILAC PO-E TRASPARENTE			●		5	3	3	3		
	TEXILAC POLIMER 2000	●		●		4	2	2	4		
	TEXILAC TRASPARENTE LUCIDO			●	●	2	4	5	2		
OPAQUES	WHITES										WR - DUAL W PLUS SPEEDCURE
	BB 95 BIANCO R					1	5	3	3		
	ECOTEX BIANCO 2045					1	4	3	4		
	MNK 22 BIANCO					1	5	2	3		
	TEXILAC A SPRUZZO BIANCO	●				4	2	2	4		
	TEXILAC BIANCO LUCIDO				●	2	3	4	3		
	TEXILAC E-LF BIANCO				●	5	3	3	3		
	TEXILAC MONO A FREDDO BIANCO	●				3	3	3	3		
	TEXILAC MONO A FREDDO BIANCO EXTRA	●				3	3	3	3		
	TEXILAC PO BIANCO					3	3	5	2		
	TEXILAC PO EXTRA BIANCO					3	4	5	2		
	TEXILAC PO-E BIANCO					5	3	4	3		
	TEXILAC PO-E SF BIANCO				●	5	3	4	3		
	BASES										WR DUAL W PLUS
	BB 95 BASE COPRENTE R			●			2	5	3	3	
	MNK 22 PASTA BASE S			●			2	5	3	3	
	TEXILAC E-LF BASE			●			5	3	4	3	
	TEXILAC MONO A FREDDO BASE PER COLORATI	●		●			3	3	3	3	
	DISCHARGE										
	TEXILAC DISCHARGE LB				●			5	3	4	
	TEXILAC DISCHARGE TRASPARENTE				●			4	3	4	
	TEXILAC DECOLORTX DENIM								3	4	
SERIES											
TEXILAC MONO A FREDDO	●	●				3	4	3	3		
TEXILAC PO E		●				5	4	4	3		

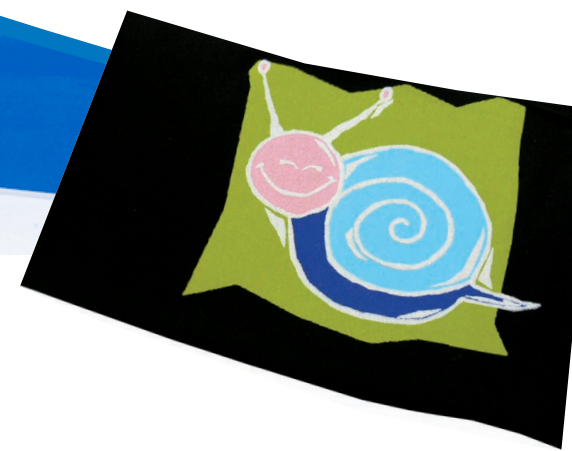
WATER BASED LACQUERS AND BINDERS											
PRODUCTS	CHARACTERISTICS									SUGGESTED EMULSIONS ZERO-IN RANGE	
	ROOM-TEMPERATURE DRYING	COLOURED SERIES	PIGMENTABLE	TRANSFER	OPACITY	ELASTICITY	BRIGHTNESS	GENERAL FASTNESS	SOFTNESS		
SPECIAL EFFECTS	ADHESIVES										WR DUAL W PLUS
	TEXIFLOCK			●							
	TEXIFLOCK ADESIVO 143				●		1				
	TEXIFLOCK ST				●						
	TEXIFLOCK RT-SF				●		1				
	TEXIFLOCK RT				●						
	TEXIFLOCK AR				●						
	TEXIFLOCK ADESIVO TRANSFER ELASTICO				●		1				
	TEXILAC TRASPARENTE PER GLITTER						3				
	TEXILAC TRASPARENTE PER ORO						3				
	TEXILAC PERLA 2000					1	3			3	
	TEXILAC ORO					1	2			3	
	TEXILAC PERLA					1	2			3	
	TEXILAC ARGENTO					1	2			3	
	TEXILAC NEOPRENE			●		1	2			3	
	TEXILAC CAT-EYE					1	2			3	
	TEXILAC UP TRASPARENTE			●		1	1			3	
	TEXILAC UP-VN			●		1	1			4	
	TEXILAC CRACKING TRASPARENTE			●						1	
	TEXILAC CRACKING BIANCO			●		1				1	
											WR DUAL W PLUS UNIVERSAL

LEGEND

1 = SCARCE 2 = SUFFICIENT 3 = QUITE GOOD 4 = GOOD 5 = EXCELLENT



Textile Printing



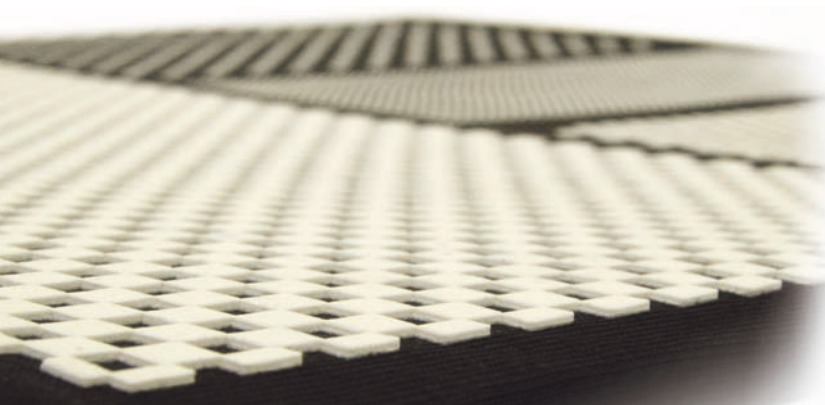
PLASTISOL

Plastisol is the "Spirit" of Textile Screen Printing. It means a complete high quality level range able to meet the requirements of a field more and more steered by creativity.

PLASTISOL								
PRODUCTS	CHARACTERISTICS						SUGGESTED EMULSIONS ZERO-IN RANGE	
	CURING [°C]	COLOURED SERIES	ECO-FRIENDLY	ELASTICITY	PIGMENTABLE	TRANSFER		
TRANSPARENTS	TEXIPLAST 5000 PROCESS P.D.T.	150-170			●		DUAL W PLUS UNIVERSAL	
	TEXIPLAST 5000 PROCESS	150-170	●		●	●		
OPAQUES	TEXIPLAST AS BASE	150-160			●	●	UNIVERSAL	
	TEXIPLAST 5000	140-150	●		●	●	DUAL W PLUS UNIVERSAL	
	TEXIPLAST 5000 EXTENDER BASE	140-150			●	●		
	TEXIPLAST 7000 MATCHING SYSTEM	140-150		●	●	●		
TEXIPLAST FLUO PLUS	150-170	●		●				
SPECIAL EFFECTS	3D							SPEEDCURE UNIVERSAL
	TEXIPLAST AS TRASPARENTE	150-160			●	●		
	TEXIPLAST PL TRASPARENTE	150-160			●	●		
	TEXPRI 48-12 (T.PLAST 7000 TRANSPARENT)	150-160		●	●	●	DUAL W PLUS UNIVERSAL	
	TEXIPLAST BRIGHT SILVER	150-160			●			
	TEXIPLAST PERLA	150			●	●		
	TEXIPLAST BLISTER EFFECT	165-180			●	●		
ADHESIVES							DUAL W PLUS SPEEDCURE UNIVERSAL	
TEXIPLAST TRANSFER TRASPARENTE	110-120			●	●			
TEXIPLAST COLLANTE TRANSFER	110-120			●	●			
TEXIPLAST PER FLOCK	150-160			●				
TEXIPLAST TRANSFER BIANCO	110-120			●	●			
TEXPRI 50-155 (T.P. 7000 LITHO TRANSFER)	110-120		●	●	●			

PLASTISOL RANGE: WHITES																	
PRODUCTS	APPLICATION		SUBSTRATES			CURING [°C]	CHARACTERISTICS						SUGGESTED EMULSION ZERO-IN RANGE				
	SCREEN PRINTING	TRANSFER	ELASTIC	NON ELASTIC	BACKGROUND		PHTHALATE FREE	HEAVY METAL FREE	PRINTABILITY	OPACITY	NO-TACK	DRYING TIME FLASH CURE		TOUCH	NO-BLEEDING	SUGGESTED THREAD NUMBER [1/10cm max]	WASHING RESISTANCE [°C]
5000 BIANCO	●	●	●	●	s		●	140-150	4	4	4	3	4	2	90	60	DUAL W PLUS UNIVERSAL
5000 BIANCO SUPERFLASH	●		●	●	s		●	130-150	4	4	5	5	3	1	90	60	
5000 BIANCO EXTRA F	●		●	●	s		●	130-150	3	5	4	4	3	1	70	60	
5000 BIANCO PE	●		●	●	s		●	130-140	2	5	2	2	1	5	70	60	
7000 MS WHITE	●	●	●	●	s	●	●	140-150	5	4	4	3	4	2	90	60	
7000 FLASH CURE	●		●	●	s	●	●	140-150	4	4	5	5	3	1	90	60	
7000 EXTRA WHITE	●		●	●	s	●	●	140-150	4	5	4	4	3	1	70	60	

LEGEND
 LB = LIGHT BACKGROUND DB = DARK BACKGROUND
 1 = SCARCE 2 = SUFFICIENT 3 = QUITE GOOD 4 = GOOD 5 = EXCELLENT



Textile Printing



AUXILIARIES AND COMPLEMENTARY PRODUCTS

AUXILIARIES FOR WATER BASED LACQUERS AND BINDERS

PRODUCTS	CHARACTERISTICS											
	WATER BASED	PLASTISOL	TRANSFER	RETARDER	CATALYST	PRIMER	SOFTENER	THICKENER	THINNERS	POWDERS	PIGMENTS	PUFF AGENT
BB 95 ADDITIVO S	●			●								
ECOTEX PIGMENTI	●										●	
TEXILAC CATALIZZATORE	●				●							
CATALIZZATORE APS N	●				●							
TEXILAC COLORANTE	●										●	
TEXILAC COLORANTE FLUO	●										●	
TEXILAC CORRODENTE PM	●				●							
TEXILAC DECOLORTEX ATTIVATORE	●				●							
TEXILAC DISTACCANTE	●		●			●						
ECOTEX FIX 40	●				●							
ECOTEX FIX 50	●				●							
TEXILAC RITARDANTE	●			●								
TEXILAC RITARDANTE GEL	●			●								
TEXILAC EMULGATORE NPF	●			●								
ECOTEX AMMORBIDENTE MN	●						●					
TEXILAC ADDENSANTE 162	●							●				
TEXILAC ADDENSANTE 346 NEW	●							●				
POLVERE TERMOPLASTICA	●	●	●							●		
ORO RICCO PALLIDO POLV.FIN 80	●	●								●		
ORO RICCO PALLIDO R POLV.FIN 80	●	●								●		
RAME POLV. FINEZZA 80	●	●								●		
ORO RICCO PALLIDO TB FIN.30	●	●								●		
PASTA ALLUMINIO 212	●	●								●		
PASTA ALLUMINIO 1923	●	●								●		
PASTA ORO 1922 FINEZZA 80	●	●								●		
PIGMENTO FOSFORESCENTE	●	●								●		
POLVERE PERLACEA ORO	●	●								●		
POLVERE PERLACEA ARGENTO	●	●								●		
TEXIPLAST ADDITIVO PROMOTEX		●			●							
TEXIPLAST ADDITIVO HOT SPLIT		●	●				●					
TEXIPLAST ADDITIVO 33		●					●					
TEXIPLAST ADDITIVO RIGONFIANTE		●										●
TEXIPLAST 5000 ADDENSANTE		●						●				
TEXIPLAST ADDITIVO 554		●							●			
TEXIPLAST 5000 ADDITIVO PE		●			●							

PLASTISOLS AUXILIARIES

PRODUCTS	MAX.SUGGESTED %						
	THICKENING	ADDITIVO 33 [IT INCREASES ELASTICITY AND SOFTNESS]	ADDITIVO 554 [IT REDUCES INK VISCOSITY]	ADDITIVO PROMOTEX [ADHESION PROMOTER ON SYNTHETIC FABRICS]	ADDITIVO RIGONFIANTE [PUFF AGENT]	EXTENDER BASE [MATTING AGENT]	ADDITIVO HOT-SPLIT [HOT SPLIT TRANSFER]
TEXIPLAST 5000 COLORATO	1 %	5 % - 10 %	5 %	10 % - 15 %	5 % - 20 %	5 % - 50 %	5 % - 15 %
TEXIPLAST 5000 PROCESS	1 %	5 % - 10 %	5 %	10 % - 15 %			
TEXIPLAST 7000 MS	1 %		5 %				
TEXIPLAT BLISTER EFFECT	1 %	5 %	5 %	10 %			
TEXIPLAST BRIGHT SILVER	1 %	5 % - 10 %	5 %	10 % - 15 %	5 % - 20 %		
TEXIPLAST PERLA	1 %	5 % - 10 %	5 %	10 % - 15 %	5 % - 20 %		
TEXIPLAST FLUO PLUS	1 %	5 % - 10 %	5 %	10 % - 15 %	5 % - 20 %		
TEXIPLAST AS	1 %	5 % - 10 %	5 %	10 % - 15 %	5 % - 20 %		
TEXIPLAST PL	1 %	5 % - 10 %	5 %	10 % - 15 %	5 % - 20 %		
TEXIPLAST TRANSFER	1 %	5 % - 10 %	5 %		5 % - 20 %		



Textile Printing



COLORS... AND COLORS AGAIN!

Texiplast 7000 Matching System is composed of Data Box, CD and a Computerized Scales for the attainment of a wide range of dyes as well as the electronic filing of more than 100 Customized Recipes. It is available in two versions: "complete package" or individual components.

FUNCTIONING OF THE DOSAGE SYSTEM

The use of **DATA BOX** is simple. By selecting the needed formula from the data bank stored inside the **DATA BOX**, then you carry out the progressive weight of each component.

In case of mistake, the system allows to modify the following weights, thus reaching the proportional total weight. It is possible to connect any type of compatible scales to the **DATA BOX**.

The system is already settled for five languages. It is possible to store in its memory up to 100 customized recipes different from the Pantone® ones. It is equipped with a luminescent bar to control the filling with a sound warning when the quantity has been overtaken.



DATA BOX

MIXER

TECHNICAL CHARACTERISTICS	
	MIXER 25
Max. mixing weight	- 35 kg
Max. container height	40 - 400 mm
Max. container diameter, bottom	360 x 370 mm
Autom. clamping and unclamping	Yes
Timer settings	3 times, user-programmable
Motor power	0,9 kW
Voltage / Fuse	230 V / 16 A
Machine dimensions (wxdxh)	710x610x1180 mm
Weight	166 kg

APPLICATION FIELDS

- Homogenization of printing inks PLASTISOL
- Preparation of dispersions and solutions
- Mixing of solvent-based substances and chemicals

MAIN FEATURES

- EVM (Enhanced Vertical Motion). Boosted mixing effect thanks to an increased vertical excursion
- SAS (Shock Absorbing Suspension). Minimized vibrations thanks to a special suspension
- INI (Improved Noise Insulation). Outstanding sound insulation



MIXER